

# Scanchain PLUS.



## At ScanChain we always try to refine what's already working.

The constant search for the best product does not exist only with our customers, but is also rooted in **ScanChain's DNA**.

For many years, **ScanChain's** conveyor chains have been considered as **market leaders in quality and durability**.

This includes DIN8165 and DIN8167, also known as the **FV and M series conveyor chains**.

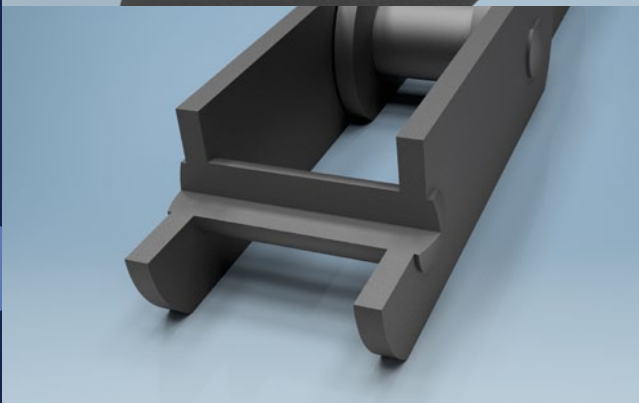
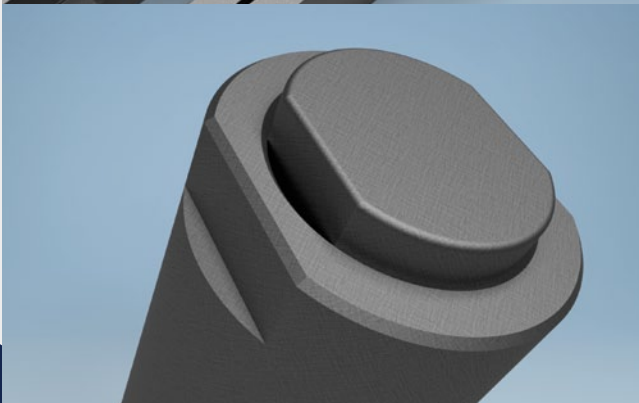
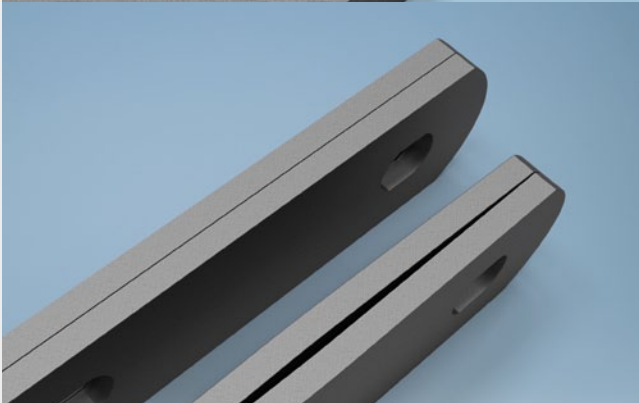
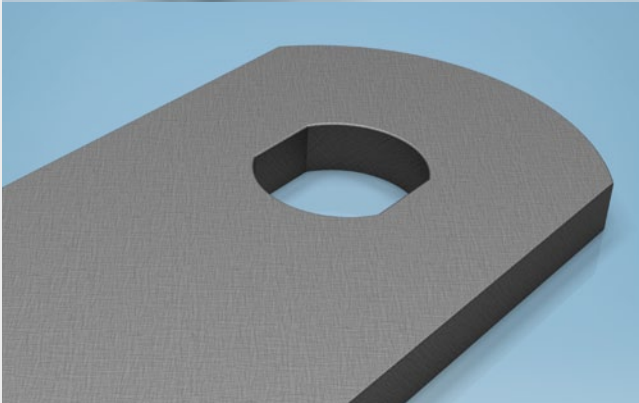
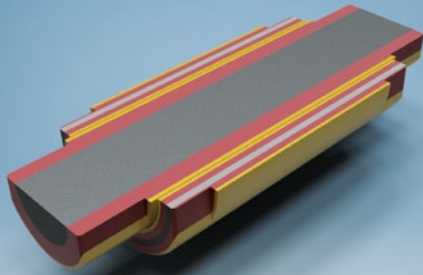
Therefore, it is with great pleasure we present **PLUS**.

PLUS conveyor chains are **refined in every detail**. PLUS Conveyor chains have **longer service life, higher tensile strength and less elongation**, measured over the chain's load and lifetime.



Hjortevaenget 6, DK-4130 Viby Sjælland, Denmark  
tel. +45 78 77 95 96  
e-mail: [info@scanchain.dk](mailto:info@scanchain.dk)  
[www.scanchain.net](http://www.scanchain.net)

**STANDARD DEPTH OF HARDENING  
PLUS DEPTH OF HARDENING**



To achieve these results, **special materials and hardening methods for the pin and bush are used**, just as the pin is made soft before round riveting. This reduces the risk of breakage of the pin when it is rivetted. **The pin is round rivetted**, ensuring a complete and uniform attachment to the side plate.

**The special hardening process** of both pin and bush results in **higher hardening depth and softer core hardness** thus resulting in a higher wear resistance on pin and bush and **higher flexibility** in the pin versus normal pins that easily breaks due to brittleness

Both the pin and the bush have **anti-rotation flatness**, which ensures that neither the pin nor the bush can rotate in the side plate. The match between the pin and the bush in the side plate is also improved by **press-fit**.

When the side plate is cut, it can bend a little bit. To ensure **100% parallelism** in the side plates, they are cut from tempered steel then flatten before mounting of the pin and the bush.

**PLUS Conveyor chains are available in DIN8165 (FV) and DIN8167 (M).**

Call us at  
**+45 78 77 95 96**

and hear more about  
**PLUS conveyor chains.**

You are also welcome to send us an email at  
**info@scanchain.dk**

