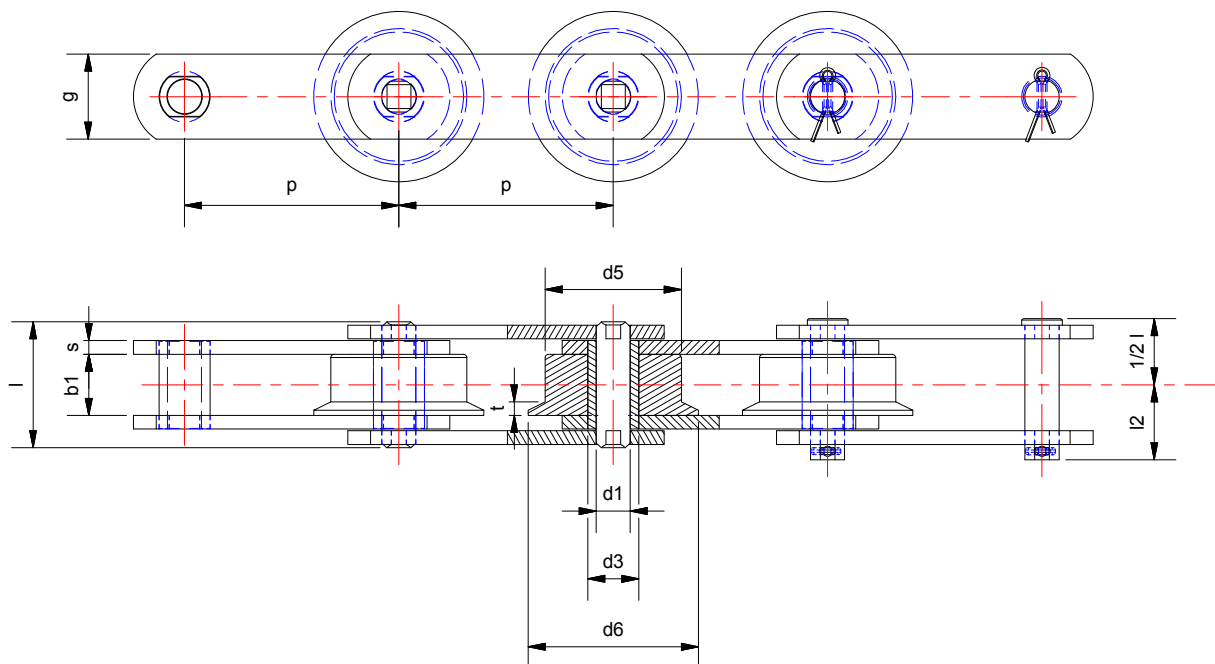


# DIN 8165 D style



Chain No.	Pitch p [mm]	Breaking load [kN]	Breaking load* [kN]	Average weight (bush type) [kg/m]	Over-All pin & cotter l [mm]	Over-All pin & cotter l2 [mm]	Small roller d4 [mm]	Large roller d5 [mm]	Flange roller d5 [mm]	Flange roller d6 [mm]	Flange roller thickness t [mm]	Bushings diameter d3 [mm]	Between sidebars b1 [mm]	Sideplate thickness s [mm]	Sideplate height g [mm]	Sideplate height g1 [mm]	Sideplate height g2 [mm]	Pin d1 [mm]
FV40	50	42	47	2.24	36	21	20	32	40	50	4	15	18	3	25	35	22	10
FV40	63	42	47	2.08	36	21	20	32	40	50	4	15	18	3	25	35	22	10
FV40	80	42	47	1.92	36	21	20	32	40	50	4	15	18	3	25	35	22	10
FV40	100	42	47	1.76	36	21	20	32	40	50	4	15	18	3	25	35	22	10
FV40	125	42	47	1.60	36	21	20	32	40	50	4	15	18	3	25	35	22	10
FV63	63	64	75	3.46	45	26	26	40	50	63	5	18	22	4	30	40	25	12
FV63	80	64	75	3.73	45	26	26	40	50	63	5	18	22	4	30	40	25	12
FV63	100	64	75	2.92	45	26	26	40	50	63	5	18	22	4	30	40	25	12
FV63	125	64	75	2.67	45	26	26	40	50	63	5	18	22	4	30	40	25	12
FV63	260	64	75	2.45	45	26	26	40	50	63	5	18	22	4	30	40	25	12
FV90	63	100	115	5.72	53	30	30	48	63	78	6.5	20	25	5	35	45	27,5	14
FV90	80	100	115	5.20	53	30	30	48	63	78	6.5	20	25	5	35	45	27,5	14
FV90	100	100	115	4.67	53	30	30	48	63	78	6.5	20	25	5	35	45	27,5	14
FV90	125	100	115	4.35	53	30	30	48	63	78	6.5	20	25	5	35	45	27,5	14
FV90	160	100	115	3.87	53	30	30	48	63	78	6.5	20	25	5	35	45	27,5	14
FV90	200	100	115	3.50	53	30	30	48	63	78	6.5	20	25	5	35	45	27,5	14
FV90	250	100	115	3.41	53	30	30	48	63	78	6.5	20	25	5	35	45	27,5	14
FV112	100	120	170	6.11	62	35	32	55	72	90	7.5	22	30	6	40	60	30	16
FV112	125	120	170	5.85	62	35	32	55	72	90	7.5	22	30	6	40	60	30	16
FV112	160	120	170	5.26	62	35	32	55	72	90	7.5	22	30	6	40	60	30	16
FV112	200	120	170	5.00	62	35	32	55	72	90	7.5	22	30	6	40	60	30	16
FV112	250	120	170	4.72	62	35	32	55	72	90	7.5	22	30	6	40	60	30	16
FV140	100	145	180	7.38	67	38	36	60	80	100	9.5	26	35	6	45	60	37,5	18
FV140	125	145	180	6.78	67	38	36	60	80	100	9.5	26	35	6	45	60	37,5	18
FV140	160	145	180	6.56	67	38	36	60	80	100	9.5	26	35	6	45	60	37,5	18
FV140	200	145	180	5.82	67	38	36	60	80	100	9.5	26	35	6	45	60	37,5	18
FV140	250	145	180	5.48	67	38	36	60	80	100	9.5	26	35	6	45	60	37,5	18
FV180	125	190	250	10.70	86	49	42	70	100	125	13	30	45	8	50	70	45	20
FV180	160	190	250	9.72	86	49	42	70	100	125	13	30	45	8	50	70	45	20
FV180	200	190	250	9.12	86	49	42	70	100	125	13	30	45	8	50	70	45	20
FV180	250	190	250	8.51	86	49	42	70	100	125	13	30	45	8	50	70	45	20
FV180	315	190	250	8.20	86	49	42	70	100	125	13	30	45	8	50	70	45	20
FV250	160	275	300	13.00	97	55	50	80	125	155	15	36	55	8	60	80	50	26
FV250	200	275	300	11.80	97	55	50	80	125	155	15	36	55	8	60	80	50	26
FV250	250	275	300	10.80	97	55	50	80	125	155	15	36	55	8	60	80	50	26
FV250	315	275	300	10.00	97	55	50	80	125	155	15	36	55	8	60	80	50	26
FV315	160	370	480	20.04	113	70	60	90	140	175	18	42	65	10	70	90	55	30
FV315	200	370	480	18.24	113	70	60	90	140	175	18	42	65	10	70	90	55	30
FV315	250	370	480	16.79	113	70	60	90	140	175	18	42	65	10	70	90	55	30
FV315	315	370	480	15.53	113	70	60	90	140	175	18	42	65	10	70	90	55	30
FV315	400	370	480	14.56	113	70	60	90	140	175	18	42	65	10	70	90	55	30

\* Breaking Load With heat treated Plates

