

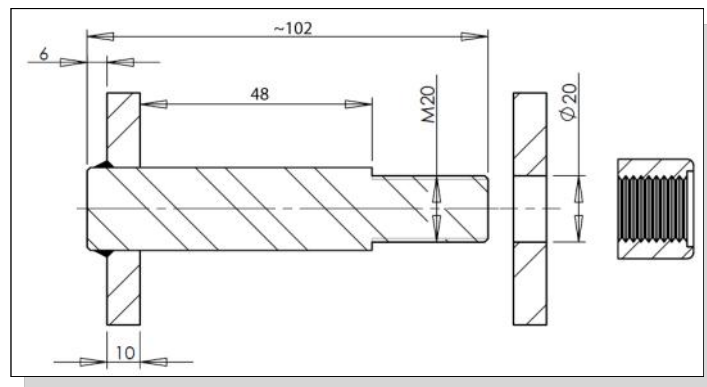
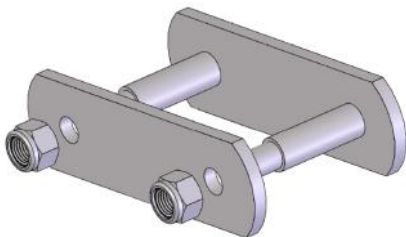
## IT'S NUTS NOT TO!

Secure your breakload on welded chains with the optional bolted connecting link.

The weakest link of the chain is always the connecting link. Choosing a connecting link with pin, clip or cotter only weakens the chain further and makes the \*30% extra breakload obtained by welding the pin and bush obsolete.

Often the assembly process of a welded chain can be difficult due to access problems or explosion hazards.

By using the optional bolted connecting link you can choose to have each welded chain strand assembled with a locking nut and bolt in the end.



Connecting link with M20 bolt for M315-A-160

The sideplate is easily fitted over the pin and the nut is fastened until the sideplate hits the shoulder on the pin. The shoulder also secures an accurate innerwidth on both ends of the connecting link.



The bolted connecting link has been tested to destruction and proves that no breakload is lost due to assembly with a bolted connecting link.

Test certificate can be issued.

ScanChain  
Holmensvej 36A  
DK-3600 Frederikssund

Contact: Kåre Söderberg

Office: +45 702 796 00  
Gsm: +45 402 402 13  
Fax: +45 473 507 01

\* An average of 30% extra breakload compared to DIN Norm is achieved when welding the pin and bush of the chain. ScanChain can issue test certificate on request!