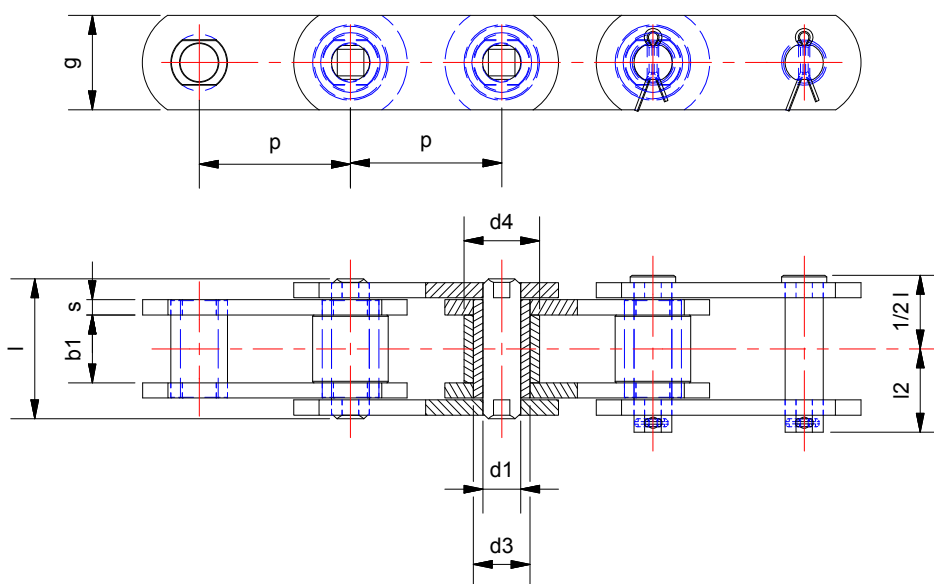


DIN 8167 B style



Chain No.	Pitch p [mm]	Breaking load [kN]	Breaking load* [kN]	Average weight (bush type) [kg/m]	Over-All pin & cotter l [mm]	Over-All pin & cotter l2 [mm]	Small roller d4 [mm]	Large roller d5 [mm]	Flange roller d6 [mm]	Flange roller thickness t [mm]	Bushings diameter d3 [mm]	Between sidebars b1 [mm]	Sideplate thickness s [mm]	Sideplate height g [mm]	Sideplate height g1 [mm]	Sideplate height g2 [mm]	Pin d1 [mm]
M20	40	20	32	1.30	33	18	12.5	25	32	3.5	9	16	2.5	18	25	16	6
M20	50	20	32	1.18	33	18	12.5	25	32	3.5	9	16	2.5	18	25	16	6
M20	63	20	32	1.10	33	18	12.5	25	32	3.5	9	16	2.5	18	25	16	6
M20	80	20	32	1.00	33	18	12.5	25	32	3.5	9	16	2.5	18	25	16	6
M28	50	28	42	1.50	36	20	15	30	36	4	10	18	3	20	30	20	7
M28	63	28	42	1.43	36	20	15	30	36	4	10	18	3	20	30	20	7
M28	80	28	42	1.32	36	20	15	30	36	4	10	18	3	20	30	20	7
M28	100	28	42	1.24	36	20	15	30	36	4	10	18	3	20	30	20	7
M40	63	40	60	1.29	40.5	23	18	36	45	4.5	11	20	4	25	35	22.5	8
M40	80	40	60	2.11	40.5	23	18	36	45	4.5	11	20	4	25	35	22.5	8
M40	100	40	60	1.97	40.5	23	18	36	45	4.5	11	20	4	25	35	22.5	8
M40	125	40	60	1.86	40.5	23	18	36	45	4.5	11	20	4	25	35	22.5	8
M56	63	50	85	3.50	45	26	21	42	50	7	15	24	4	30	45	30	10
M56	80	50	85	3.20	45	26	21	42	50	7	15	24	4	30	45	30	10
M56	100	50	85	2.40	45	26	21	42	50	7	15	24	4	30	45	30	10
M56	125	50	85	2.70	45	26	21	42	50	7	15	24	4	30	45	30	10
M56	160	50	85	2.50	45	26	21	42	50	7	15	24	4	30	45	30	10
M80	80	80	125	4.51	54.5	31	25	50	60	7	18	28	5	35	50	32.5	12
M80	100	80	125	4.13	54.5	31	25	50	60	7	18	28	5	35	50	32.5	12
M80	125	80	125	3.83	54.5	31	25	50	60	7	18	28	5	35	50	32.5	12
M80	160	80	125	3.57	54.5	31	25	50	60	7	18	28	5	35	50	32.5	12
M80	200	80	125	3.38	54.5	31	25	50	60	7	18	28	5	35	50	32.5	12
M112	80	112	175	6.30	63	36	30	60	75	7.5	21	32	6	40	60	40	15
M112	100	112	175	5.60	63	36	30	60	75	7.5	21	32	6	40	60	40	15
M112	125	112	175	5.80	63	36	30	60	75	7.5	21	32	6	40	60	40	15
M112	160	112	175	5.37	63	36	30	60	75	7.5	21	32	6	40	60	40	15
M112	200	112	175	4.63	63	36	30	60	75	7.5	21	32	6	40	60	40	15
M160	100	160	260	9.80	72	41	36	70	90	8.5	25	37	7	50	70	45	18
M160	125	160	260	8.50	72	41	36	70	90	8.5	25	37	7	50	70	45	18
M160	160	160	260	7.80	72	41	36	70	90	8.5	25	37	7	50	70	45	18
M160	200	160	260	7.30	72	41	36	70	90	8.5	25	37	7	50	70	45	18
M160	250	160	260	6.90	72	41	36	70	90	8.5	25	37	7	50	70	45	18
M224	125	224	340	12.30	84	47	42	85	105	10	30	43	8	60	90	60	21
M224	160	224	340	11.10	84	47	42	85	105	10	30	43	8	60	90	60	21
M224	200	224	340	10.20	84	47	42	85	105	10	30	43	8	60	90	60	21
M224	250	224	340	6.90	84	47	42	85	105	10	30	43	8	60	90	60	21
M224	315	224	340	8.98	84	47	42	85	105	10	30	43	8	60	90	60	21
M315	160	315	520	19.20	97	57	50	100	124	10.5	36	48	10	70	100	65	25
M315	200	315	520	16.70	97	57	50	100	124	10.5	36	48	10	70	100	65	25
M135	250	315	520	15.60	97	57	50	100	124	10.5	36	48	10	70	100	65	25
M315	315	315	520	14.70	97	57	50	100	124	10.5	36	48	10	70	100	65	25
M315	400	315	520	13.80	97	57	50	100	124	10.5	36	48	10	70	100	65	25

* Breaking Load With heat treated Plates

~ continued



Chain No.	Pitch p [mm]	Breaking load [kN]	Breaking load* [kN]	Average weight (bush type) [kg/m]	Over-All pin & cotter l [mm]	Over-All pin & cotter l2 [mm]	Small roller d4 [mm]	Large roller d5 [mm]	Flange roller d6 [mm]	Flange roller thickness t [mm]	Bushings diameter d3 [mm]	Between sidebars b1 [mm]	Sideplate thickness s [mm]	Sideplate height g [mm]	Sideplate height g1 [mm]	Sideplate height g2 [mm]	Pin d1 [mm]
M450	200	450	700	23.90	114	70	60	120	149	11.5	42	56	12	80	120	80	30
M450	250	450	700	22.12	114	70	60	120	149	11.5	42	56	12	80	120	80	30
M450	315	450	700	20.65	114	70	60	120	149	11.5	42	56	12	80	120	80	30
M450	400	450	700	19.45	114	70	60	120	149	11.5	42	56	12	80	120	80	30
M630	250	630	900	35.28	137	75	70	140	170	15	50	67	14	100	140	90	36
M630	315	630	900	32.53	137	75	70	140	170	15	50	67	14	100	140	90	36
M630	400	630	900	30.30	137	75	70	140	170	15	50	67	14	100	140	90	36
M630	500	630	900	28.64	137	75	70	140	170	15	50	67	14	100	140	90	36
M900	250	900	1250	53.20	153	83	85	170	210	17	60	78	16	120	180	120	44
M900	315	900	1250	48.20	153	83	85	170	210	17	60	78	16	120	180	120	44
M900	400	900	1250	44.50	153	83	85	170	210	17	60	78	16	120	180	120	44
M900	500	900	1250	41.60	153	83	85	170	210	17	60	78	16	120	180	120	44
M900	600	900	1250	39.20	153	83	85	170	210	17	60	78	16	120	180	120	44

* Breaking Load With heat treated Plates